

Index Tools

Version 1.4 - November 2007

A shareware plug-in for FrameMaker

Silicon Prairie Software

www.SiliconPrairieSoftware.com

Copyright ©1999-2007

Portions Copyright ©1986-2002 Adobe Systems Incorporated

All Rights Reserved

Copyright

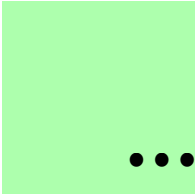
Index Tools and its associated documentation are copyright © 1999-2007 by Silicon Prairie Software LLC and Steven Kubis. All rights reserved.

Warranty

This software and documentation are provided as-is. Silicon Prairie Software disclaims any warranty regarding this software and documentation, including the warranties of merchantability and fitness for a particular purpose.

Limitation of Liability

Neither Silicon Prairie Software nor anyone else who has been involved with the creation, production, or delivery of this software and documentation shall be liable for any indirect, incidental, special, exemplary or consequential damages, including but not limited to any loss of anticipated profit or benefits, resulting from the use of this product.



Contents

- Introduction 1**
 - Requirements 1
 - Installation 1
 - Windows 1
 - Macintosh 2
 - Removal. 2
 - Shareware notice 2
 - Redistributing Index Tools 2
 - Problem reports and suggestions 2

- Chapter 1 Merge Index 3**
 - The “merge” process 3
 - Well-formed indexes 4
 - Using Merge Index 5

- Chapter 2 Add Continueds 7**
 - Index requirements 7
 - Index levels 7
 - Balanced columns 7
 - Index paragraph styles 7
 - IXStyle.fm 8
 - Using Add Continueds 9
 - Continued Line Styles 10

- Appendix A Configuration Settings 11**
 - Using a configuration file 11
 - Settings reference 12

ContinuedFormat	12
CustomContinuedText	12
DefaultContinuedType	13
ProcessIndex	13

Appendix B Registration 15

License types	15
Single-user license	15
Site license	15
Worldwide license	15
Registration methods	16
Online	16
Direct purchase	16
Registration code	16

Index 17



Introduction



Index Tools is a FrameMaker plug-in that provides utilities that aid in formatting an index. Two utilities are included in this version:

- Merge Index
- Add Continueds



If you have more advanced indexing needs, look at Index Tools Professional, also available from Silicon Prairie Software.

Requirements

To use the Index Tools plug-in, you must be using FrameMaker version 6.0 or later. The plug-in is available for the following platforms:

- Windows
- Macintosh

Installation

To install the Index Tools plug-in, perform the steps for the platform you are using.

Windows

Perform the following steps to install Index Tools for Windows:

- 1 Copy the appropriate version of the IndexTools.dll into the \fminit\PlugIns directory that is located in the directory where FrameMaker is installed.**



To install the plug-in, you will need to have file system permission to write to the PlugIns directory. For Windows XP and earlier, this means being logged into the system as a member of the Administrator or Power User groups. For Windows Vista with User Account Control (UAC) this means providing Administrator credentials when you copy the DLL file into the directory.

- 2 Restart FrameMaker.**

Macintosh

Perform the following steps to install Index Tools for the Macintosh:

- 1 **Copy the IndexTools file to the Modules folder. This folder is located in the folder where FrameMaker is installed.**
- 2 **Restart FrameMaker.**

Removal

To remove Index Tools, close FrameMaker if it is running. Remove the files you added when you installed the plug-in, and then restart FrameMaker.

Shareware notice

Index Tools has been released as shareware. If you find Index Tools useful, please pay the shareware fee. The \$10 cost is minimal, given the capabilities that Index Tools provides. Paying the shareware fee also encourages development of other tools like Index Tools.

Redistributing Index Tools

Index Tools is shareware. You may redistribute the Index Tools package with the following restrictions:

- You may not alter the software.
- You must distribute the entire package.
- You may not charge a fee for redistributing Index Tools.

Problem reports and suggestions

If you find any problems with the Index Tools plug-in, or if you have any suggestions for future enhancements, e-mail them to:

support@siliconprairiesoftware.com

For example, the following entries from the User’s Guide (UG) and the Getting Started (GS) manual will combine in the multi-book index:

- indexes
 - described GS 25
 - editing UG 41

However, in each individual book, they won’t combine. Merging will cause them to take up only one line in the index, reducing the size of the index.

Well-formed indexes

For the merge process to work best, the index should be “well-formed.” This means that the levels used for the index entries are consistent and applied uniformly. For example, the following index entries are well-formed:

- index tools
 - automated 36
 - manual
 - index cards 37
 - machine aided 38
 - using 52
- indexes
 - described 25
 - examples 31
 - types of 41
- indexing
 - profession 51

Notice that the levels are used consistently. The “heading” entries, such as ‘indexes’ and ‘index tools’ don’t have page numbers. An index formatted this way works well with the merge process.

Note the last index entry. It uses two lines, but could use only one. The merge process would combine this entry into the following:

- indexing, profession 51

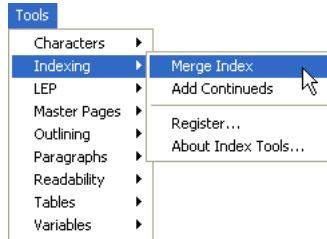
The following entry is not well-formed, but is common in indexes:

- indexing 25
- profession 51

Index Tools will properly handle this type of entry, not merging the two entries. Even though Index Tools can properly deal with this type of entry, it is desirable to remove them from your indexes.

Using Merge Index

To merge an index, generate the index as you normally would. With the index document active, point to Indexing in the Tools menu and choose Merge Index.



When you run the merge process, Index Tools examines the paragraph styles in the currently-active FrameMaker document. If it finds the appropriate paragraph styles, the process will continue. This prevents the merge process from being run on non-index documents.



You can have the merge process performed automatically after performing a generate/update operation for a book. Refer to the configuration setting "ProcessIndex" on page 13 for more information.



Chapter 2

Add Continueds

•••••

The Add Continueds utility automatically adds “continued” lines to groups of index entries that span more than one column. This chapter is divided into the following sections:

- Index requirements
- Using Add Continueds
- Continued Line Styles

Index requirements

For the Add Continueds utility to work properly with an index, the index must conform to some basic guidelines.

Index levels

The Add Continueds utility supports indexes that have entries a maximum of three levels deep. If your index has entries at level four or deeper, it may have usability problems you need to address.

Balanced columns

To have the continued lines appear properly, you **cannot** use balanced columns in your index. If you have balanced columns, Index Tools won’t be able to properly specify where columns in the index begin and end.

Index paragraph styles

The index must use FrameMaker’s default paragraph styles for paragraphs in the index, or you must specify a custom set of paragraph styles to use. The following table lists the default paragraph styles that the US English version of FrameMaker uses for indexes.

Paragraph style	Description
GroupTitlesIX	Used for group titles
Level1IX	Used for level 1 entries
Level2IX	Used for level 2 entries
Level3IX	Used for level 3 entries

If your index doesn't use these default paragraph styles, you must create a FrameMaker document named IXStyle.fm, which contains a custom list of the styles your index uses.

IXStyle.fm

If your FrameMaker index files don't use the default paragraph styles for indexes, you can define the styles to use by creating the IXStyle.fm document.

To create this document, perform the following steps:

- 1 Create a new FrameMaker document based on the standard Portrait template.**
- 2 In the first four paragraphs of the document, enter the names of the paragraph styles that are used for the index. Be sure the entries appear in the following order:**
 - Group Titles style
 - Level 1 Index style
 - Level 2 Index style
 - Level 3 Index style

For example, you would add the following entries to the IXStyle.fm file if you were using the German version of FrameMaker:

- GruppentitelSIX
- Ebene1SIX
- Ebene2SIX
- Ebene3SIX

The entries are case-sensitive, so be sure to enter them exactly as they appear in the index document.

Select a format and click OK. If you chose Custom, another dialog will be displayed that allows you to enter the “continued” line you want to use. The Add Continueds utility will insert “continued” lines for all groups of index entries that span more than one column.



You can have the add continueds process performed automatically after performing a generate/update operation for a book. Refer to the configuration setting “ProcessIndex” on page 13 for more information. Appendix A also describes configuration settings that automatically specify the type of index continuation and the continuation text or formatting you want to use.

Continued Line Styles

New text lines are added to the index document when you choose to add continuations. You may want these additional lines to use a different paragraph style than the original line on which the continuation is based. For example, if you were converting the generated index to an online format, you may want to have the online conversion process delete these additional continued lines so they don’t appear in the online output.

If Index Tools finds paragraph styles defined that have the exact name of the index styles and also include the “Cont” prefix in the name, these paragraph styles will be used for the continued lines. The following table lists the paragraph styles that would be used for continued lines for a default US English index.

Paragraph style	Description
ContLevel1IX	Used for level 1 continuations
ContLevel2IX	Used for level 2 continuations
ContLevel3IX	Used for level 3 continuations



If these paragraph styles do not exist in the document, the standard index paragraph styles will be used for the continued lines.

Appendix A

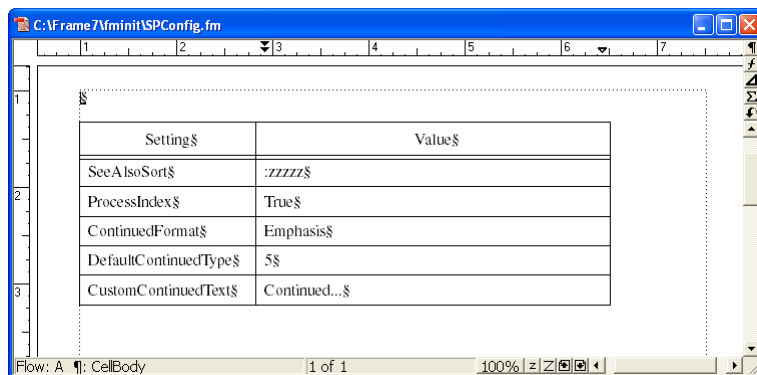
Configuration Settings



Several configuration settings are available that control the operation of Index Tools Professional. This appendix describes how to use a configuration file, and provides detailed information about each of the settings available.

Using a configuration file

To create a configuration file for use with Index Tools, copy the **SPConfig.fm** file that is included in the Index Tools distribution. This is a special FrameMaker file that can contain settings for various Silicon Prairie Software plug-ins. The following illustration shows an **SPConfig.fm** file:



Edit this file just as you would any FrameMaker file. To add a setting to the **SPConfig.fm**, add a line to the table. Enter the setting name in the **Setting** column and the setting value in the corresponding **Value** column. The settings can be in any order.

Where you install the SPConfig.fm file depends on the platform you are using:

- On Windows, place the SPConfig.fm file in the “fminit” directory where FrameMaker is installed.
- On the Macintosh, place the SPConfig.fm file in the Modules folder.

Settings reference

The following configuration settings are available in Index Tools:

- ContinuedFormat
- CustomContinuedText
- DefaultContinuedType
- ProcessIndex

ContinuedFormat

This setting specifies the character format to be applied to formatted continuations in the index. By default, Index Tools attempts to apply the “Italic” character format to the continuation text. If you include the ContinuedFormat setting, Index Tools will attempt to apply the character format specified.

In the following example, the Emphasis character format will be applied to continuation text.

Setting	Value
ContinuedFormat	Emphasis

CustomContinuedText

When you use a custom continuation in an index, you will be prompted for the text to use for the continuation. This means having to enter the same continuation text each time you add continuation lines to an index. The CustomContinuedText setting specifies the text that will be used for the continuation. If you add this setting to the SPConfig.fm file, you will no longer be prompted for the text to use for a custom continuation.

In the following example, the ProcessIndex setting indicates any index will be formatted after it is generated.

Setting	Value
ProcessIndex	True



Appendix B Registration



Index Tools is shareware, so you can try the software before you purchase it. The software is fully functional. As you evaluate the software, you will see periodic “reminder” messages indicating the software hasn’t been registered. If you find Index Tools useful, we encourage you to pay the registration fee.

License types

The following types of licenses are available for Index Tools:

Single-user license

Each single-user license allows you to use one copy of the software on one computer. If you have fewer than 10 users, it’s most cost-effective to purchase single-user licenses.

Site license

A site license allows you to use copies of the software on any machine on the site. A site is defined as an area within a 100 mile radius. It’s most cost-effective to purchase a site license if you have 10 or more users.

Worldwide license

A worldwide license allows you to use copies of the software on any machine within the organization, regardless of where the installations are located. It’s most cost-effective to purchase a worldwide license if you have 10 or more sites where the software will be used.

Registration methods

Silicon Prairie uses Kagi, an online payment processing service. To learn more about Kagi, visit them on the web at <http://www.kagi.com>. You can pay using the following methods:

Online

You can purchase a license online through the Silicon Prairie web site (<http://www.siliconprairiesoftware.com>). There you will find a secure link to the Silicon Prairie page on the Kagi web site. This is the easiest and fastest way to obtain a license.

Direct purchase

If you don't want to purchase online, you can contact Silicon Prairie Software directly to arrange payment. Contact us via e-mail at support@siliconprairiesoftware.com.

Registration code

When you register the software, you will receive your registration code through e-mail. **Save this e-mail! You will need it if you need to reinstall the software.** If you printed this documentation, write the registration code here:

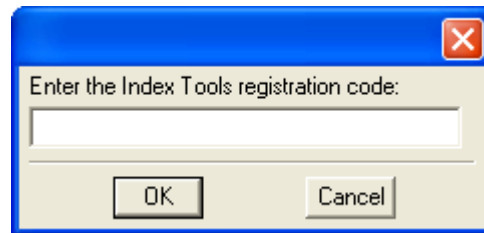
Registration Code: _____



To apply the code, choose the Register menu option via the Tools menu.

To properly save the registration code, you must have privileges to write to the directories used for the FrameMaker installation. For Windows XP and earlier, this means being logged into the system as a member of the Administrator or Power User groups. For Windows Vista with User Account Control (UAC) this means running FrameMaker with Administrator credentials. You need to do this only for the session in which you register the plug-in.

Enter the registration code you received in the dialog that's displayed.





Index

A

- Add Continueds
 - described 7
 - index requirements 7
 - using 9

B

- balanced columns 7

C

- columns, balanced 7
- configuration file
 - creating 11
 - location 12
 - settings 12
- configuration settings
 - appendix 11
 - list of 12
- continued lines
 - default type 13
 - described 9
 - formats 9
 - specifying continuation text 12
 - specifying format 12
 - styles used for 10
- ContinuedFormat, configuration setting 12
- CustomContinuedText, configuration setting 12

D

- DefaultContinuedType, configuration setting 13

F

- formatting indexes automatically 13

G

- generate/update, formatting index 13

I

- Index Tools
 - described 1
 - installation 1
 - redistributing 2
 - removing 2
 - requirements 1
 - shareware notice 2
 - supported platforms 1
- indexes
 - formatting automatically 13
 - index levels 7
 - paragraph styles 7
 - requirements to add continued lines 7
 - well-formed 4
- installing, Index Tools 1
- IXStyle.fm file, described 8

M

- Macintosh, installing Index Tools 2
- Merge Index
 - described 3
 - using 5
- merge process, described 3

P

- paragraph styles, default styles for indexes 8
- platforms supported 1
- problem reports 2
- ProcessIndex, configuration setting 13

R

- redistributing Index Tools 2
- registration, appendix 15–16
- removing, Index Tools 2
- reporting problems 2
- requirements for Index Tools 1

S

- settings in configuration file 12
- shareware notice 2
- SPConfig.fm
 - described 11
 - location 12
- suggestions 2

W

- well-formed indexes 4
- Windows, installing Index Tools 1

